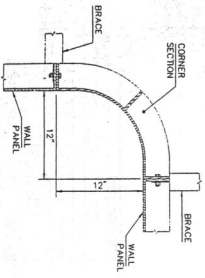


NOTE: INTERNAL PANEL BRACING OMITTED FOR CLARITY

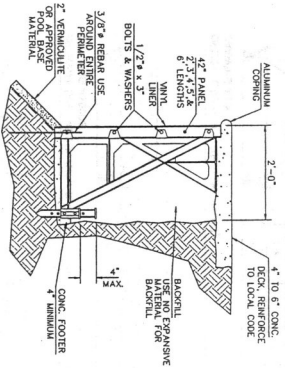
TYPICAL STANDARD BRACE AND PANEL ASSEMBLY

N.T.S.



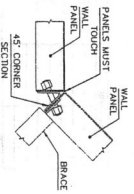
TYPICAL (90°) CORNER ASSEMBLY

N.T.S.



TYPICAL SECTION

3/4\"/>



TYPICAL (45°) CORNER ASSEMBLY

N.T.S.

GENERAL NOTES:

- All pools are N.E.P.S. 1, 2 or 3 and units otherwise noted.
- Vertical dimensions on all pools are from linear extrusions.

EXCAVATION NOTES:

- Surrounding land elevation to be 6" lower than top of pool.
- To be allowed all ground pool for working area in excavation. All voids packed in 6" to 8" layers.
- All on line should compacted backfill exceed water level or wet verso more than 12".
- Use non-separation material (no clay content) for backfill (i.e., sand, gravel, etc.).

FOUNDATION NOTES:

- Footing design based on 2000 PSF soil bearing capacity (minimum).
- Neither East Tennessee Engineering Co. nor Hydro Pools, a Division of Plastic Industries, Inc., is responsible for local foundation design, as local conditions must be investigated to determine proper soil bearing capacity.

MATERIAL SPECIFICATIONS:

- Pool Panels** Polyethylene P5 331
- Pool Braces** Polypropylene
- Pool Liner** 20 mil. PVC Vinyl Liner (c=2000 PSI @ 28 days)
- Reinforcing Steel** A574-4815-CR 60
- Vermiculite** Light-weight aggregate concrete conforming to ACI 613A & ACI 318-83 Standard specifications
- Concrete w/c = 75 pcf